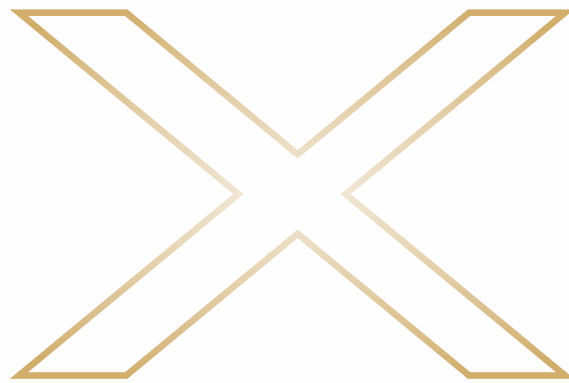


# SUNHEART CERAMIX

TILES | BATHWARE | ADHESIVE



COLLECTION 2025

80x  
300

axiSTONE

# SUNHEARRT INTRODUCTION

## Path-breaking innovations with a Promise of quality!

Inspired in collection, and unmatched in design; Sunhearrt, a brand by Sunhearrt Ceramix Private Limited, through its novel technology and product introductions, is leading the Ceramic industry to achieve a peerless national and global reputation in becoming a single-stop solution for any space amplification.

Penetrating the industry with an ever-expanding portfolio, Sunhearrt has now diversified its core strength of Ceramics, and Vitrified tiles into GVT/PVT, Porcelain, Sanitaryware, as well as a range of complete Tiling Solutions.

## Company strength and achievements that defines our place in the industry.



AMONG **TOP 10** CERAMIC BRANDS IN INDIA



**14+** Unique Surfaces



**14+** SIZES under one roof



PRESENCE IN **83+** COUNTRIES



**28 MILLION** SQM. MANUFACTURING CAPACITY/ANNUM



THE FIRST COMPANY IN THE CERAMIC INDUSTRY WITH **3-STAR EXPORT HOUSE**



**1195+** BUSINESS PARTNERS



INVESTMENTS IN **RENEWABLE ENERGY**

## Elevating spaces, uplifting surface experience!

Reshaping spaces by constantly enhancing surroundings with new possibilities. Sunhearrt promises the amalgamation of innovation and style, crafting high-end ceramic excellence. It is about taking space to a higher level, making it more appealing and adaptive.

Our focus lies in transcending the ordinary, where every tile, every design, echoes the essence of sophistication and durability. Sunhearrt stands as a beacon for those seeking not just elegance but an enduring legacy woven into the very fabric of their spaces.



## Tiles

Flooring the extensions of your dream space, tiles from Sunhearrt are a great addition to every ambience. With their simplistic elegance and finesse, our tiles introduce modernity and grandeur by manufacturing the best alternatives and replacements to natural surfaces. This collection, thence, is the perfect choice for 'architecting' the spectacular!



# Making Of axiSTONE

Crafted with precision and passion, every Axi Stone slab undergoes a meticulous process that transforms raw natural elements into sophisticated surfaces. From the selection of fine materials to advanced pressing and firing techniques, each step is designed to enhance both beauty and durability. Here's a closer look at how Axi Stone comes to life—where innovation meets craftsmanship to create surfaces that redefine modern design.



## The Fine Dust

Each Axi Stone slab starts with carefully chosen, high-quality raw materials. These materials are crushed into an even powder, which forms the base for strong and durable surfaces.



## Variegated Grains and Chips

We mix different sizes and colors of natural mineral pieces, chips, and color pigments into the base. This step creates the special look and feel of each slab.



## The Convergence

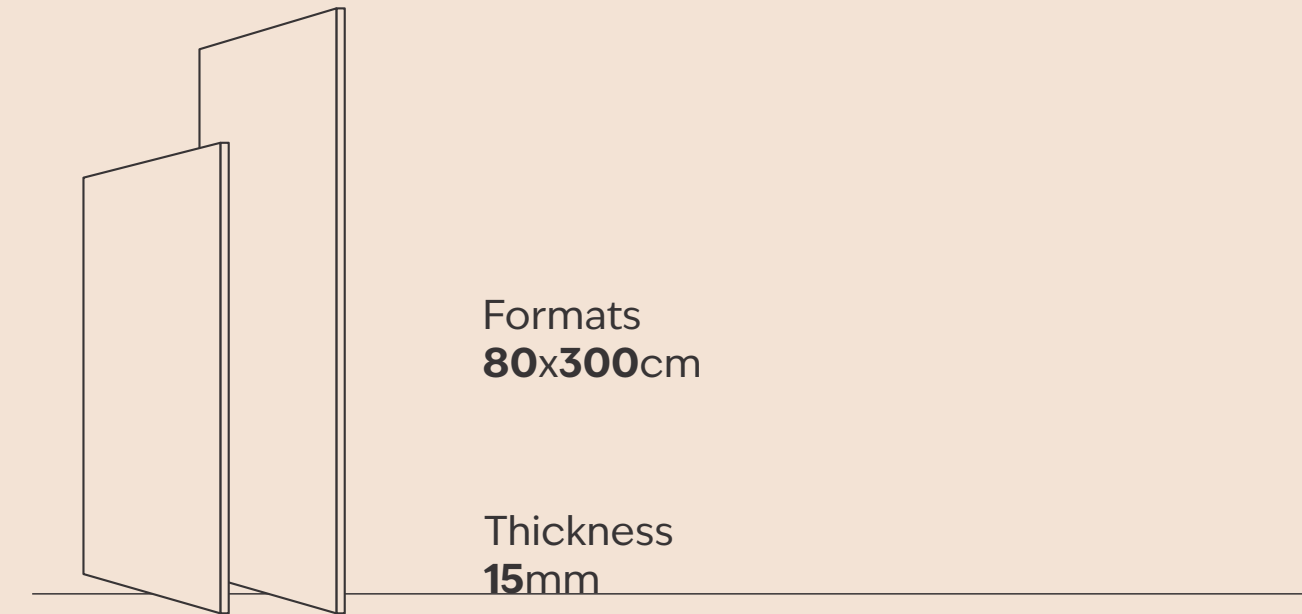
The mixture is carefully layered and pressed, ensuring all parts fit together evenly. This helps maintain the consistency of color and strength throughout the tile.



## Pressure And Firing








The slabs are pressed with high force and baked at very high heat. This hardens the slab, joining everything into a strong, smooth piece with an elegant finish.

# Formats & Thickness



Axi Stone slabs are available in an expansive 80x240cm and 80x300cm sizes with a solid 15mm thickness, making them perfectly suited for both horizontal and vertical installations across spaces. With ten superior finishes, this collection enables versatile aesthetic and tactile experiences. The large format reduces joints for seamless beauty and a powerful visual impact in any interior style.

# Advantages & Features

-  BENDING STRENGTH
-  RESISTANT TO STAINS
-  RESISTANT TO ICE & FROST
-  TAILORED DESIGN
-  ABRASION RESISTANT
-  100% NATURAL & RECYCLABLE
-  DIMENSIONAL STABILITY
-  COLOR STABILITY
-  UNALTERABLE TO UV RAYS
-  WATER RESISTANT
-  EASY TO CLEAN
-  SCRATCH & IMPACT RESISTANT
-  FIRE & HIGH TEMPERATURE RESISTANT

# Design Range

## Salt Collection

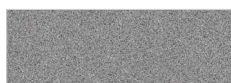
80x300cm



SALT  
WHITE



SALT  
VERDE



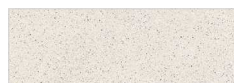
SALT  
GREY



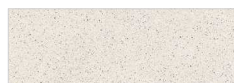
SALT  
BLACK

## Stark Collection

80x300cm



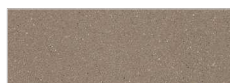
STARK  
CREMA



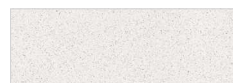
STARK  
CREMA MATT



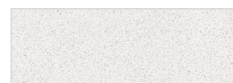
STARK  
WALNUT



STARK  
WALNUT MATT



STARK  
WHITE



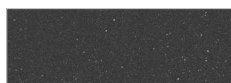
STARK  
WHITE MATT



STARK  
GREY



STARK  
GREY MATT



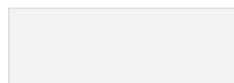
STARK  
NERO



STARK  
NERO MATT

## Steel Collection

80x300cm



STEEL  
WHITE



STEEL  
BLACK



STEEL  
LIGHT GREY



STEEL  
DARK GREY

Salt, Stark & Steel  
Collection

80x300cm



## Redefine extravagance & ageless style

Crafted for bold design statements, the Pepper Stone Collection introduces a powerful presence with its large-format slabs measuring 80x300cm. These slabs offer expansive visual continuity with minimal joints, capturing the fine-grain detail and organic tone variations of natural peppered stone. Designed for luxury interiors, facades, and high-impact spaces, the collection pairs scale with substance, embodying refined extravagance, architectural strength, and timeless appeal.

Fullbody slabs  
15mm Thickness

Salt Collection



Finish :  
Polished

Body :  
White Body



Scan for  
360°  
view

SALT  
WHITE



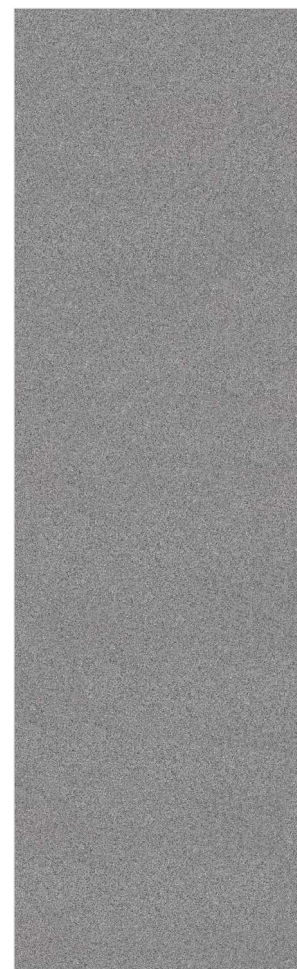
Finish :  
Polished

Body :  
Verde Body



Scan for  
360°  
view

SALT  
VERDE



Finish :  
Polished

Body :  
Grey Body



Scan for  
360°  
view

SALT  
GREY



Finish :  
Polished

Body :  
Black Body



Scan for  
360°  
view

SALT  
BLACK



Wall :  
Salt Verde  
Polished

Floor :  
Salt Verde  
Polished

Vanity Basin :  
Salt Verde  
Polished

Size :  
80x300cm

Stark Collection



Finish :  
Polished  
Body :  
Crema Body



Scan for  
360°  
view

STARK  
CREMA



Finish :  
Matt  
Body :  
Crema Body



Scan for  
360°  
view

STARK  
CREMA MATT



Finish :  
Polished  
Body :  
Walnut Body



Scan for  
360°  
view

STARK  
WALNUT



Finish :  
Matt  
Body :  
Walnut Body



Scan for  
360°  
view

STARK  
WALNUT MATT



Wall :  
Stark Crema  
Polished

Floor :  
Stark Crema Matt  
Matt

Stairs :  
Stark Crema Matt  
Matt

Size :  
80x300cm

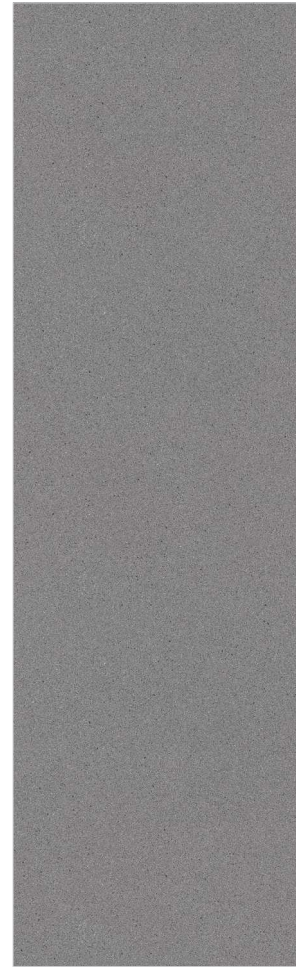
Stark Collection



Finish :  
Polished  
Body :  
White Body



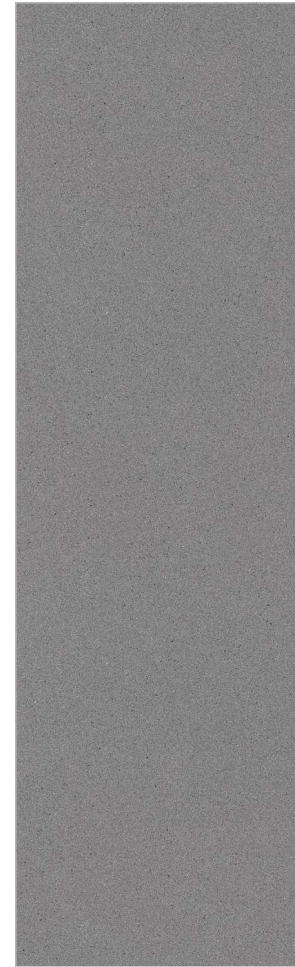
STARK  
WHITE



Finish :  
Polished  
Body :  
Grey Body



STARK  
GREY



Finish :  
Matt  
Body :  
Grey Body



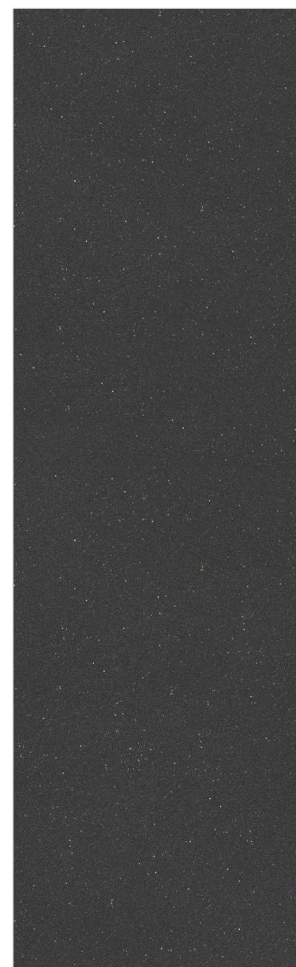
STARK  
GREY MATT



Finish :  
Matt  
Body :  
White Body



STARK  
WHITE MATT



Finish :  
Polished  
Body :  
Black Body



STARK  
NERO



Finish :  
Matt  
Body :  
Black Body



STARK  
NERO MATT



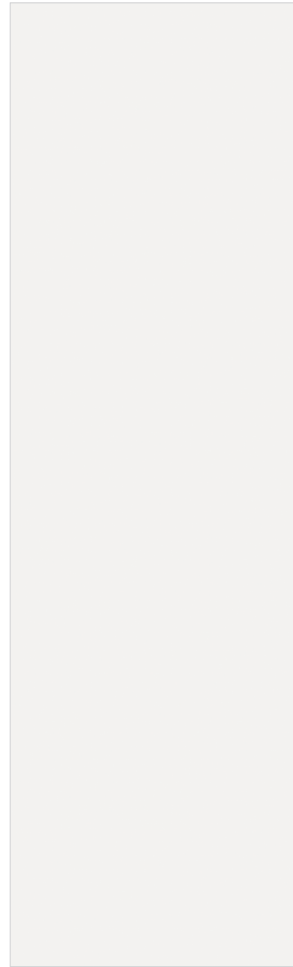
Wall :  
Stark Grey  
Polished

Floor :  
Stark Grey Matt  
Matt

Iceland Counter :  
Stark Grey  
Polished

Size :  
80x300cm

Steel Collection



Finish :  
Polished

Body :  
White Body



Scan for  
360°  
view

STEEL  
WHITE



Finish :  
Polished

Body :  
Black Body



Scan for  
360°  
view

STEEL  
BLACK



Finish :  
Polished

Body :  
Grey Body



Scan for  
360°  
view

STEEL  
LIGHT GREY



Finish :  
Polished

Body :  
Grey Body



Scan for  
360°  
view

STEEL  
DARK GREY



Wall :  
Steel White  
Polished

Floor :  
Steel White  
Polished

Size :  
80x300cm

## TECHNICAL SPECIFICATION OF axiSTONE

S. No.	Characteristics	IS 15622:2017 Group Bla E ≤ 0.08	EN 14411:2016 Group Bla Ev ≤ 0.5 %	SUNHEARRT VALUE	Test Method
<b>A DIMENSION &amp; SURFACE QUALITY</b>					
I	Length & Width	±0.1%	± 0.6% OR ± 2.0 mm	± 0.1%	ISO 10545-2 IS 13630 ( Part 1)
II	Thickness	± 5.0%	± 5.0% OR ± 0.5 mm	± 4.0%	
III	Straightness of Side	±0.1%	± 0.5% OR ± 1.5 mm	± 0.1%	
IV	Rectengularity	±0.1%	± 0.5% OR ± 2.0 mm	± 0.1%	
V	Surface Flatness				
a	Center curvatue (%)	± 0.5 %	± 0.5 % OR ± 2.0 mm	± 0.2 %	
b	Edge curvature (%)	± 0.5 %	± 0.5 % OR ± 2.0 mm	± 0.2 %	
c	Corner warpage (%)	± 0.5 %	± 0.5 % OR ± 2.0 mm	± 0.2 %	
VI	Surface Quality	Min. 95 % of tiles will be free from visible defects	Min. 95 % of tiles will be free from visible defects	Min. 98 % of tiles will be free from visible defects	
<b>B PHYSICAL PROPERTIES</b>					
I	Water Absorption	<0.08% Ind Max 0.1%	<0.5% Ind Max 0.6%	< 0.08%	ISO 10545-3 IS 13630 (Part 2)
II	Modulus of Rupture [N/mm2]	Av 35, Individual 32 min	Av 35, Individual 32 min	Min- 38	ISO 10545-4 IS 13630 ( Part 6)
III	Breaking Strength in N	700 for < 7.5mm thickness 1300 for ≥ 7.5mm thickness	700 for< 7.5mm thickness 1300 for ≥ 7.5mm thickness	>1800	
IV	Moisture Expansion in mm/m	0.02	0.06% /0.6mm/m	Nil	ISO 10545-10 IS 13630 ( Part 3)
V	Resistance to Abrasion of glazed tiles( Class I to V)	Not Applicable	Not Applicable	Not Applicable	ISO 10545-7 IS 13630 ( Part 11)
	Resistance to Deep Abrasion of Unglazed tiles ( Volume removed in mm <sup>3</sup> )	Max-140	Max -175	Max 140	ISO 10545-6 IS 13630 ( Part 12)
VI	Coefficient of linear thermal expansion from embiant temperature to 100 ° C	6 X 10 <sup>-6</sup> K <sup>-1</sup>	9 X 10 <sup>-6</sup> K <sup>-1</sup> max	6 X 10 <sup>-6</sup> K <sup>-1</sup>	ISO 10545-8 IS 13630 ( Part 4)
VII	Thermal Shock Resistance	10 Cycle Passed	10 cycle min	Passed 10 Cycle	ISO 10545-9 IS 13630 (Part 5)
VIII	Crazing Resistance	Not Applicable	Not Applicable	Not Applicable	ISO 10545-11 IS 13630 (Part 9)
IX	Frost resistance	100 Cycle	Required	Passed	ISO 10545-12 IS 13630 (Part-10)
X	Impact Resistance	0.55	0.55	0.8	ISO 10545-5 IS 13630 (Part 14)
XI	Bulk Density	2.2	Not A requirement		ISO 10545-3 IS 13630 (Part 2)
<b>C CHEMICAL PROPERTIES</b>					
I	Stain Resistance	Min Class 2	Declare Value	Min Class 2	ISO 10545-14 IS 13630 (Part 7)
II	Resistance to Household Chemicals	Class AA	Min Class B	Min Class AA	ISO 10545-13 IS 13630 (Part 7)
III	Resistance to Acid and alkalies	Decleared Value	Decleared Value	Class AA	ISO 10545-13 IS 13630 (Part 8)

## PACKING DETAILS

SIZE	PIECES / BOX	COVERAGE AREA / BOX	WEIGHT / BOX
80x300cm	1 pc	2.40 sq. mtr / 25.83 sq. ft.	82 kg (Approx)

Note: Color shown in catalog may vary with the original tile. Slight shade & size variation is an inherent property of Ceramic / Vitrified tiles.  
For Normal Glossy Class III, High Glossy Class II/Class III, Matt Class III/Class IV.

# SUNHEARRT CERAMIX

TILES | BATHWARE | ADHESIVE

## SUNHEARRT CERAMIX PRIVATE LIMITED

(Formerly Known as Sunshine Tiles Company Pvt. Ltd.)

101-103, First Floor, Titanium One, Near Pakwan Cross Roads, S. G. Highway, Ahmedabad - 380 054. Gujarat, INDIA

T. +91-79-29704833, +91-79-61554444 | E. info@sunheartrt.com

### COMPANY EXPERIENCE CENTRE

"Sunheartrt Ceramix" Unit-1, S.No. 150 & 160/P1,  
8-A-National Highway, At. Dhuva, Tal, Wankaner,  
Dist. Morbi - 363621 (Gujarat)

### MUMBAI OFFICE

301/A, 3rd Floor, Sri Krishna, Opp. Laxmi Industrial Estate,  
New Link Road, Andheri (W) Mumbai - 400053 (Maharashtra)  
T. +91-99099 80498 | E. showroom1.mh@sunheartrt.com

### DELHI OFFICE

D-1, Mansarovar Garden, New Delhi-110015  
T. +91-95120 00324  
E. showroom1.dl@sunheartrt.com

### BENGALURU OFFICE

150 Rashtriya Vidyalay Road, Nr. Minerva Circle,  
Vishweshwarapura, Mavalli, Bangalore - 560004 (Karnataka)  
T. +91-95120 00270 | E. showroom1.ka@sunheartrt.com

### CHENNAI OFFICE

"Megh Towers" Old No. 307, New No. 165,  
Poonamallee High Road, Maduravoyal, Chennai - 600095 (Tamilnadu)  
T. +91-70944 39491 | E. showroom2.tn@sunheartrt.com

### COCHIN OFFICE

Jacob's Building, 1st Floor, Nh Bye Pass-66,  
Geethanjali Bus Stop, Vyttila, Kerla-682024  
T. +91-99099 88625 | E. showroom1.kl@sunheartrt.com

### INTERNATIONAL ENQUIRY

T. +91-99099 88489 | E. export@sunheartrt.com

TOLL FREE: 1800 233 1012

E. info@sunheartrt.com | [www.sunheartrt.com](http://www.sunheartrt.com)

